

# Havoc C2 Framework – A Defensive Operator’s Guide

---

 [immersivelabs.com/blog/havoc-c2-framework-a-defensive-operators-guide/](https://immersivelabs.com/blog/havoc-c2-framework-a-defensive-operators-guide/)

April 9, 2024

The Havoc command and control (C2) framework is a flexible post-exploitation framework written in Golang, C++, and Qt, created by [C5pider](#). Engineered to support red team engagements and adversary emulation, Havoc offers a robust set of capabilities tailored for offensive security operations.

Havoc was first released in October 2022, and is still under active development. At the time of writing, Havoc supports HTTP(s) and SMB as a communication protocol for the implants. Havoc’s ability to generate payloads, including **exe** binaries, **dll** files, and **shellcode**, appeals to threat actors seeking a malleable and simple post-exploitation framework for their campaigns.

This research aims to empower defenders to detect the presence of Havoc, analyze its proprietary agents, known as **Demons**, and enhance organizational resilience against modern post-exploitation attack flows.

## In the wild

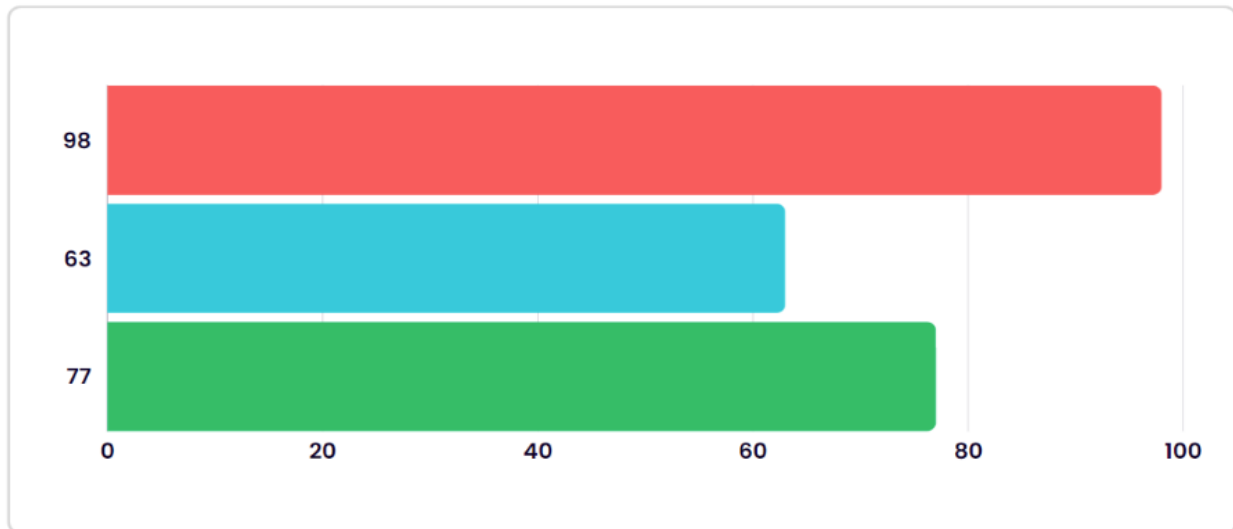
---

Havoc is open-source, simple to use, and has little defensive-focused coverage, making it a popular option for adversaries. Over time, it’s likely to grow even more popular, particularly as other tools like Cobalt Strike already have extensive defensive coverage. Some organizations like [ZScaler](#), [Critical Start](#), and [The Stack](#) have analyzed Havoc demons actively used in the wild targeting government organizations.

Between Q4 2022 and Q1 2023, Havoc coverage increased as it could be used to bypass the latest version of Windows 11 Defender. [Threat actors](#) have since utilized Havoc, leveraging [third-party tools](#) and plugins to bypass AV and EDR solutions, enhancing their flexibility in attacks.

Between Q2 and Q4 2023, Spamhaus released its **Botnet Threat Updates** report, revealing a 22% increase in the use of Havoc as a backdoor during that period. The graph below represents the total change in the use of Havoc throughout 2023.

# Havoc C2 Use by Quarter



● Q2 2023

● Q3 2023

● Q4 2023

There was a 36% drop in use between Q2 and Q3 2023. This decline may be attributed to the waning novelty of bypassing Defender, as Microsoft consistently updates its security measures to safeguard users against emerging threats. Toward the end of the year, there was a 22% increase in Havoc usage. This trend suggests that with ongoing updates to Havoc and extensive research into other C2 frameworks, Havoc will inevitably be used more by threat actors.

This graph was created and informed based on the [Spamhaus Q2](#), [Spamhaus Q3](#), and [Spamhaus Q4 2023](#) threat reports.

## Threat hunting

---

Because defensive coverage isn't very common right now for Havoc, it's important that defenders understand Havoc's capabilities and equip themselves with the knowledge of detecting and analyzing Havoc, including its traffic and generated artifacts. The Immersive Labs Cyber Threat Intelligence (CTI) team has closely examined Havoc and identified methods for incident responders to obtain both host-based and network-based indicators of compromise (IoCs).

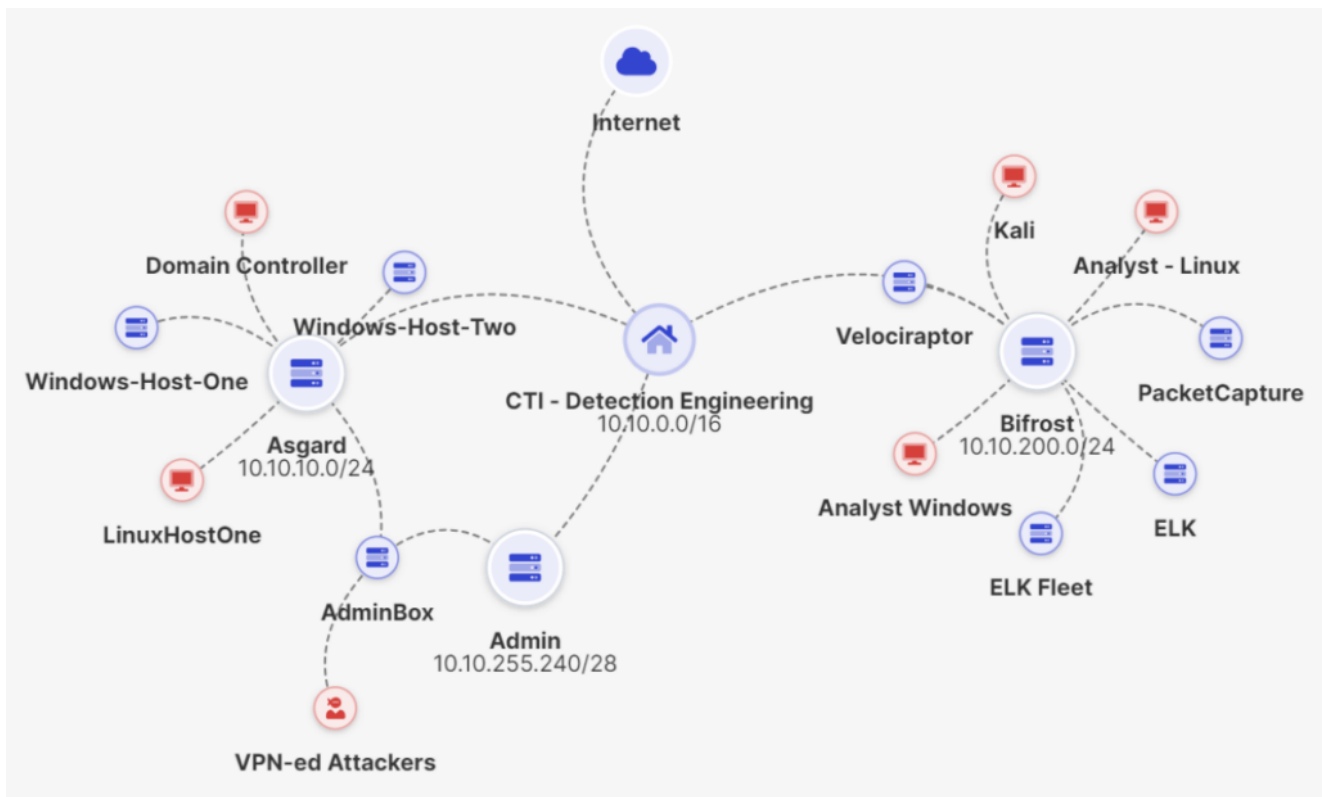
This report details these technical findings and the detection engineering process used to discover them.

## The range

To capture all of the traffic and artifacts necessary for analyzing the Havoc agents, we first set up a specialized range made for detection engineering with high-fidelity log collection and EDR capabilities. This was deployed using an Immersive Lab's Cyber Range template. You can achieve the same outcome by manually deploying your own infrastructure, following [Havoc C2's documentation](#), and reading this report.

The range had the following essential components:

- An external host machine to deploy the agent (playing the attacker role)
- Event logging
  - Sysmon
  - Elastic
- Network logging
  - Full packet capture
  - DNS logging
  - TLS secrets
- EDR
  - Velociraptor
- Reset/restore



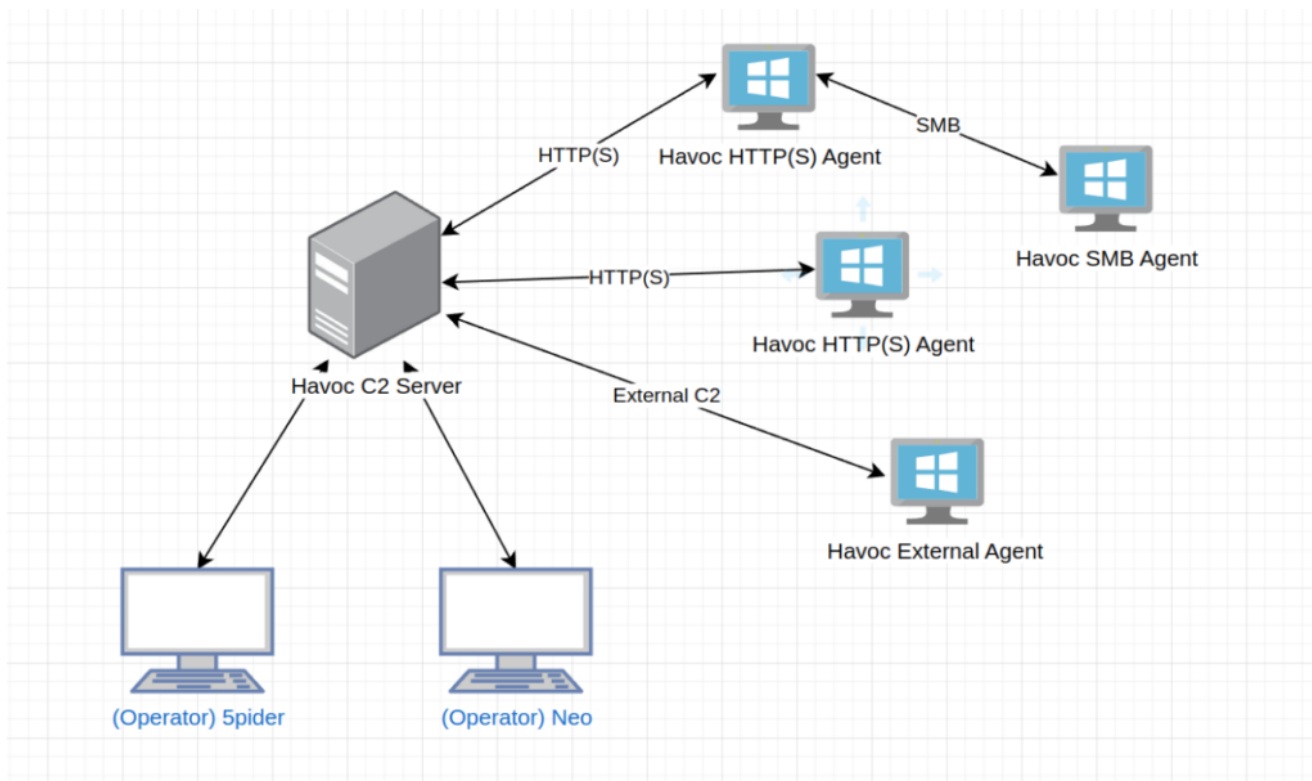
## Attacker's infrastructure

With our defensive range, called **Heimdall**, in place, we then had to deploy the attacker's infrastructure. All that was required to run Havoc was a **Kali Linux** instance on a public IP address. Ubuntu 20.04/22.04, Debian-based distributions, Arch distributions, and MacOS also work, though the steps to installing and setting up Havoc will differ based on the distribution you use. The [Havoc installation documentation](#) covers these differences. A single AWS EC2 (or similar) instance on a public IP address is all that's needed, making it easy to open the required TCP, HTTP/S, and DNS ports to the range.

## Havoc teamserver

---

The Havoc C2 framework is split into two components: the teamserver and the client. The teamserver handles connected offensive operators and manages the listeners, along with callback parsing and the downloading of screenshots and files from the **demon** (agent). The client side is the user interface that operators will see; operators can task the agent and receive outputs, such as command outputs, or loot. **Loot** is a term defined by Havoc and includes screenshots and file downloads.



For more details on how to use Havoc, please refer to [Havoc's documentation](#).

## Installation and configuration

---

Installation is pretty straightforward. Exact steps for installing, configuring, and creating payloads can be found in [Havoc's official documentation](#) and [GitHub repository](#).

## Obtaining the encryption keys from the teamserver and database

---

Our research aimed to identify reliable and repeatable ways to obtain encryption keys. Reverse engineering a demon yielded no actionable results. We needed a way to determine what the keys were, so they could be used to decrypt and examine memory and network traffic.

To that end, we adopted the same technique we used in our [Sliver C2](#) research. Because Havoc is open source, we identified the source code responsible for generating the encryption keys and added print statements to the code.

```
package crypt

import (
    "crypto/aes"
    "crypto/cipher"

    "Havoc/pkg/logger"
)

func XCryptBytesAES256(XBytes []byte, AESKey []byte, AESIV []byte) []byte {
    var (
        ReverseXBytes = make([]byte, len(XBytes))
    )

    block, err := aes.NewCipher(AESKey)
    if err != nil {
        logger.Error("Decryption Error: " + err.Error())
        return []byte{}
    }

    stream := cipher.NewCTR(block, AESIV)
    stream.XORKeyStream(ReverseXBytes, XBytes)

    // Add the print statements below to aes.go

    fmt.Println("Encryption Key", hex.EncodeToString(AESKey))
    fmt.Println("IV Key", hex.EncodeToString(AESIV))

    return ReverseXBytes
}
```

Upon modifying `aes.go`, recompiling the teamserver, and running the demon, the keys were printed as standard output.

```
AES Key: 70ba26a26e90c02492509af6025486eed63e12dc9e16c6eee216eae096c44c0a
AES IV: d8847e4ada2e6c4c0e8486f2980642a4
```

Now that we knew what the keys were, we used this knowledge to develop a methodology for obtaining the keys from packet captures and memory dumps.

Another method we found was to obtain the keys from the database using SQLite. This involves running **sqlite3** from **teamsrvr.db**, and running the query below, replacing the AgentID with the agent ID of your demon.

```
SELECT AgentID, AESKey, AESIv, FROM TS_Agents WHERE AgentID=1268566762
```

The output below shows the Key and IV, but they are Base64 encoded.

```
sqlite> SELECT AgentID, AESKey, AESIv FROM TS_Agents WHERE AgentID=1268566762;  
1268566762|jAqAJjByeLDehHKiQHwIqDzSIASy6NZy8FSSMtYIHvw=|kA7IzMJGsL4kInZ4FCD0Dg==  
sqlite>
```

After decoding, we get the keys.

```
AESKey = 8c0a8026307278b0de8472a2407c08a83cd22004b2e8d672f0549232d6081efc  
IV = 900ec8ccc246b25e242276781420f40e
```

These keys differ from those previously shown because we used two different demons to test these methods. However, using the methods described above will always print the keys.

## Obtaining the encryption keys from packet capture

---

Having obtained the keys, we then developed a methodology to help defensive operators acquire them from both packet capture and memory, detailed below.

After setting everything up, we ran the demon on the target machine with Wireshark packet capture enabled. This allowed us to monitor all the HTTP and TCP traffic between the demon and the teamsrvr.

Upon analyzing the first packet in the capture, we noticed that the first bytes said **dead beef**, which is a magic byte value, shown in the red box in the picture below.

```

0000  00 0c 29 32 4a 27 00 0c 29 7f c4 b4 08 00 45 00  2J'... ).....E.
0010  00 3c a4 9e 40 00 80 06 00 00 c0 a8 ed 82 c0 a8  <...@.....
0020  ed 80 c1 67 00 50 78 dc a5 a2 7d b0 3b 46 50 18  ...gPx... }.;FP.
0030  04 01 5c 83 00 00 00 00 00 10 de ad be ef 6f a8  ..\.....o.
0040  35 30 00 00 00 01 00 00 00 00                                     50.....

```

Upon checking the Havoc C2 GitHub repository, we identified the definition of the **0xDEADBEEF** magic value, found in the **Defines.h** file.

```

15      #define DEMON_MAGIC_VALUE 0xDEADBEEF

```

Havoc uses a standard **polling** technique known as **beaconing**, where the agent checks in with the teamserver at regular intervals. This interval is set by the C2 operator as a sleep time value. Identifying C2 communications in packet capture can be characterized by identifying this beaconing behavior.

For Havoc, the request to the server contains the response from any commands or a request for any jobs. The response from the server to the client contains the next task the implant is being instructed to execute, for example, to run a shell command.

Going further through the packets, we see continuous communications of a POST request and an HTTP status code 200 acknowledgment. This is a transmission where the demon checks in with the teamserver. These are continuous requests; their cadence is dictated by the sleep time set on the agent, where it encrypts itself in memory to avoid detection.

```

16 1.866293 192.168.1.104 192.168.1.104 HTTP 74 POST / HTTP/1.1 (*)
18 1.875936 192.168.1.104 192.168.1.104 HTTP 182 HTTP/1.1 200 OK

```

The default sleep value is two seconds, but this is easily changed by the attacker. To avoid being detected in memory by EDRs, Havoc implements a sleep technique that encrypts its own payload in memory. These sleep techniques include:

- **Foliage** – Creates a new thread, using **NtApcQueueThread** to queue a **return-oriented programming** (ROP) chain, encrypting the demon and delaying execution.
- **Ekko** – Uses the **RtlCreateTimer** to queue an ROP chain that encrypts the demon in memory, delaying its execution. This technique has a [GitHub repository](#).

**WaitForSingleObjectEx** – No obfuscation, just delays execution for the time the sleep is set for, default is two seconds.

Going through the packets in the capture, and using Wireshark’s filter feature, we filtered on **hex**, searching for the encryption keys we got earlier from the teamserver. We also identified the agent ID, correlating this based on it being shown in the teamserver. This pattern has

remained consistent with multiple tests with different agents using different sleep technique configurations.

The encryption keys appear to be sent in the first non-check-in HTTP POST request from the agent to the teams server, shown in the picture below, along with the magic byte header, agent length, and AgentID.

The image shows a hex dump of an HTTP POST request. Red boxes and arrows highlight specific fields:

- Magic Byte Header:** 00 00 01 04
- AES Key:** 70 ba 26 a2 6e 90 c0 24 92 50 9a f6 02 54 86 ee d6 3e 12 dc 9e 16 c6 ee e2 16 ea e0 96 c4 4c 0a d8 84 7e 4a da 2e
- IV Key:** d8 84 7e 4a da 2e
- Agent ID:** a3 2a
- length field:** 00 00 01 04

```
AES Key: 70ba26a26e90c02492509af6025486eed63e12dc9e16c6eee216eae096c44c0a
AES IV: d8847e4ada2e6c4c0e8486f2980642a4
```

## Decrypting traffic

To identify the location of the traffic, we had to identify packets with a length that would dictate something more was happening than a check-in or sharing of keys. We identified a POST packet with a length of 3673 bytes, which was the largest packet so far. At this point, we could only guess that this was a command. We needed a way to validate this hypothesis.

The image shows a screenshot of a browser's developer tools. A context menu is open over the 'File Data: 3673 bytes' field. A red arrow points to the 'Copy' option in the menu, with the label 'Copying the value'.



We did this by copying the value and bringing it into CyberChef so we could attempt to use the keys to decrypt it and potentially see a command output. For CyberChef, we needed the **encryption method** (AES256), the **key**, **IV**, and the **mode**, which we knew was CTR, since the [AESCrypt.h](#) file from Havoc's GitHub repository indicated as much.

```
4  #include <windows.h>
5
6  #define CTR 1
7  #define AES256 1
8
9  #ifndef CTR
```

Adding these to CyberChef and decrypting got us nothing, until we started removing bytes one by one from the beginning of the input, the picture below shows the command output that gets sent to the teamserver.

Recipe

**AES Decrypt**

Key: 70ba26a26e90cb... HEX \*    IV: d8847e4ada2e6c... HEX \*    Mode: CTR

Input: Hex    Output: Raw

```

a0ff4c62d7c4c64c82a0bd99881621f5d54d31d9d5d9f0c614ffc53b0e0cceda076aaf719c3581d1f0062a55e17964b0ea0b60edfe32b42544a9ba7c150c0b0cd
908912021091ac9e72f0891180b920b005c27a139da2874a207d664e5425e3ec36d21c05da2be06c0f4e5416ad435a6cf0633020520d6774e0bae02e55fed7001b73ff9
3dc0baa11bc3aa13ca3951efc4e0f40066677506f17abe75a7064ddc0c402be50b5b6318036679b36ee08d12474c0126f92e93d23f037d7c79630e5fc8c0bd043c
932966ab279500592ace6ae4276419309053031291b07002f09efcbf52081b1a0fb0950f6efddc0e067b7f4129a9167f9053b6dbde11591d715d32061c5510279feada0a44
-- 706 pr 1

```

Output

```

-----
User Name      SID
-----
MINDEV2311EVAL User 5-1-5-21-67890001-150531277-426855428-1000

GROUP INFORMATION
-----
Group Information      Type      SID      Attributes
-----
MINDEV2311EVAL\None      Group      5-1-5-21-67890001-150531277-426855428-513      Mandatory group,
Enabled by default, Enabled group,
Everyone      Well-known group      5-1-1-0      Mandatory group,
Enabled by default, Enabled group,
NT AUTHORITY\Local account and member of Administrators group\Well-known group      5-1-5-114
BUILTIN\Administrators      Alias      5-1-5-32-544
BUILTIN\Users      Alias      5-1-5-32-545      Mandatory group,
Enabled by default, Enabled group,
BUILTIN\Performance log Users      Alias      5-1-5-32-550      Mandatory group,
Enabled by default, Enabled group,
NT AUTHORITY\INTERACTIVE      Well-known group      5-1-5-4      Mandatory group,
Enabled by default, Enabled group,
CONSOLE LOGON      Well-known group      5-1-2-1      Mandatory group,
Enabled by default, Enabled group,
NT AUTHORITY\Authenticated Users      Well-known group      5-1-5-11      Mandatory group,
Enabled by default, Enabled group,
NT AUTHORITY\This Organization      Well-known group      5-1-5-15      Mandatory group,
Enabled by default, Enabled group,
NT AUTHORITY\Local account      Well-known group      5-1-5-113      Mandatory group,
Enabled by default, Enabled group,
LOCAL      Well-known group      5-1-2-0      Mandatory group,
Enabled by default, Enabled group,
NT AUTHORITY\NTLM Authentication      Well-known group      5-1-5-64-10      Mandatory group,
Enabled by default, Enabled group,
Mandatory Label\Medium Mandatory Level      Label      5-1-16-0192      Mandatory group,
Enabled by default, Enabled group,

Privilege Name      Description      State
-----
SeShutdownPrivilege      Shut down the system      Disabled
SeChangeNotifyPrivilege      Bypass traverse checking      Enabled
SeUndockPrivilege      Remove computer from docking station      Disabled
SeIncreaseWorkingSetPrivilege      Increase a process working set      Disabled
SeTimeZonePrivilege      Change the time zone      Disabled

```

The image below shows the rough location where the beginning of the output is located, based on the CyberChef output.

```

0000 00 0c 29 32 4a 27 00 0c 29 7f c4 b4 08 00 45 00  ..)2J'.. ).....E.
0010 0e 81 a4 c2 40 00 80 06 00 00 c0 a8 ed 82 c0 a8  ....@... ..
0020 ed 80 e3 31 00 50 06 a2 92 6e 91 c4 bd 2e 50 18  ...1.P.. .n...P.
0030 04 02 5c 5b 00 00 00 00 0e 55 de ad be ef 03 9d  ..\[.....U.....
0040 a3 2a 00 00 00 01 db 61 7f 24 af 0f fc 46 2d 7c  .*.....a $...F-|
0050 e4 c6 4c 82 a0 bd 99 68 83 62 1f 5d 55 4d 33 d9  ..L...h .b.]UM3.
0060 db 5d 9f 0c 61 4f fc 53 b9 e9 cc ed a0 76 aa fe  .]...a0.S .....v..
0070 71 9c 35 81 d1 f0 06 d2 a5 5e 17 96 e4 b0 ea 0b  q.5..... ^.....
0080 60 d9 ed fe 32 b4 25 44 af 9e a7 c1 59 cb c0 0a  `...2.%D .....Y...
0090 cd 98 69 12 02 16 91 ac 94 e7 2f 68 91 18 6b 92  ..i..... /h..k.
00a0 0b 00 65 c2 7a 13 9d a2 87 4a 20 77 d6 64 e5 42  ..e.z... .J w.d.B
00b0 5e 3e c3 6d 21 c0 5d a2 be 06 c0 f4 e5 41 6a d4  ^>.m!..].....Aj.
00c0 35 a6 cf 06 33 30 2d 52 8d 67 77 4e 60 ae 08 2e  5...30-R .gwN`...
00d0 55 fe d7 00 b1 b7 3f f9 3d c8 8a a1 15 bc aa a1  U.....?.. =.....
00e0 3c a3 95 1e fc d4 ea 8f 40 8d 66 67 75 0d 6f 17  <..... @.fgu.o.
00f0 a8 e7 5a 7d 64 dd c8 cc d4 92 be 58 db 5b 63 18  ..Z}d... ..X.[c.
0100 03 66 c7 9b 36 ee 98 d1 24 77 4c 81 26 f9 2d 93  .f..6... $wL.&--
0110 d2 3f 83 78 d7 cf 96 30 e5 fc 8c c0 bd 04 3c 93  .?..x...0 .....<.
0120 29 66 8a b2 79 65 00 59 82 ac e6 ae 42 7d 41 93  )f..ye.Y .....B}A.
0130 09 05 38 33 12 91 b8 76 02 f0 9e fc bf 52 98 1b  ..83...v .....R..
0140 1a 0f b8 95 6f 6e fd dc f0 e0 67 bf 41 29 a9 16  .....on... .g.A)..
0150 7f 90 53 b6 db de 11 59 1d 71 5d 32 66 1c 55 10  ..S...Y .q]2f.U.
0160 27 9f ea da 0a 44 be 1d ec 98 99 a1 9e 28 01 a0  '...D... ..(..

```

The natural direction to go from here would be to try to discover commands in the pcap; however, this isn't possible as they are sent via beacon object files (BOFS). The only known way to discover what commands an attacker used is to capture and decrypt outputs and draw an inference from them.

We identified a number of the commands being sent from the header field. However, a large number of features are implemented as BOFS, and all share the same **command\_id**. This makes it difficult to understand the exact command being executed without analyzing the BOF, or the response. We have released a tool that can be found in the GitHub repos, which extracts and saves all sent BOFS and their responses if you have the AES key.

## Obtaining the encryption keys from memory

---

We started this process by grabbing the keys from the **teamserver.db** using **sqlite3**, as previously discussed in the 'Obtaining the encryption keys from the teamserver and database' section. We also went to the victim machine and dumped the memory.

Then, we needed to find the process PID for our demon, called **chrome-updater.exe**, using Volatility. We did this using the command below against our memory dump file.

```
vol -f /mnt/c/Users/path-to-capture/virtual-memory-file.vmem windows.pslist
```

We can see the process PID is **5544**.

PID	PPID	ImageFileName	Offset(V)	Threads	Handles	SessionId	Wow64	Cr
4	0	System	0xc90f0107b040	155	-	N/A	False	2024-02-07 10:15:4
5544	4520	chrome-updater	0xc90f093e1080	5	-	1	False	2024-02-07

With the process PID in hand, we can then dump the process memory for **chrome-updater.exe**.

```
vol -f /mnt/c/Users/path-to-capture/virtual-memory-file.vmem -r none windows.memmap --dump --pid 5544
```

Next, we faced the memory dump for the chrome-updater.exe process. We opened it in a hex editor and began searching for the keys. We wanted to determine if the keys were present in memory and if they could be identified through a scannable, consistent structure.

The answer to these questions is yes! We tested this a number of times and came to the same result, as shown in the picture below.

```

00039D80 00 00 00 00 00 00 00 00 00 00 00 00 00 00 00 .....
00039D90 D0 01 00 00 00 00 00 00 68 0F 15 A1 59 1E 00 19 Ð.....h..;Y...
00039DA0 00 00 01 23 DE AD BE EF 4B 9C CA EA 00 00 00 63 ...#P.¼iKœÊÊ...c
00039DB0 00 00 00 00 8C 0A 80 26 30 72 78 B0 DE 84 72 A2 ....E.€&0rx°P,,rc
00039DC0 40 7C 08 A8 3C D2 20 04 B2 E8 D6 72 F0 54 92 32 @|.™<Ò .°èÖrδT'2
00039DD0 D6 08 1E FC 90 0E C8 CC C2 46 B2 5E 24 22 76 78 Ö..ü..ÈÏÂF°^$"vx
00039DE0 14 20 F4 0E 4E 68 77 22 5B 57 B4 0F 7F 47 A4 8A . ô.Nhw"[W'..G#Š
00039DF0 88 17 4B 12 8C 9C 67 EF 7A D8 CA A7 C9 06 68 AE ^.K.œgizøÊŠÉ.h@
00039E00 92 33 A5 6B 7F 18 23 28 07 EF A2 48 B0 BD C6 F5 '3¥k..#(.ÿcH°¼EÖ
00039E10 45 A4 67 36 8E 1B BA 34 D2 12 32 26 6C 17 CB 27 E#g6Ž.°4Ò.2&l.Ë'
00039E20 34 41 2E 8B E1 AA 19 84 C4 D6 57 DE 8C 4D EA 57 4A.<á².„ÄÖWßœMêW
00039E30 B2 3A A0 A9 B7 2F 32 34 50 D0 43 1F 4A 3F 89 30 *: ©-/24PœC.J?%0

```

```

AESKey = 8c0a8026307278b0de8472a2407c08a83cd22004b2e8d672f0549232d6081efc
IV = 900ec8ccc246b25e242276781420f40e

```

The structure is exactly the same both in memory and packet capture, specifically as below.

```

DE AD BE EF {?? ?? ?? ??} 00 00 00 63 00 00 00 00 {AES KEY} {AES IV}

```

**DE AD BE EF** is the magic signature for Havoc, and while it can be modified in source, it is the default value. The next four bytes are actually the AgentID, and **00 63** is the **DEMON INIT** command sent from the client to the team server.

### Detecting Havoc C2 in memory

With a reliable method established for obtaining encryption and IV keys from packet capture and memory, a YARA rule was created to specifically detect demon **INIT** requests in memory.

```

rule HavocC2Init
{
    meta:
        description = "Detects Havoc C2 Demon Init requests in memory"
        reference = "https://immersivelabs.com"
        author = "@kevthehermit"
        date = "2024-02-07"

    strings:
        $DEMON_INIT = { 00 00 ?? ?? de ad be ef ?? ?? ?? ?? 00 00 00 63 00 00 00 00 }

    condition:
        $DEMON_INIT
}

```

We have also created a Volatility plugin for detecting Havoc C2 in memory, which can be found in our [GitHub repository](#). An example of the expected output is shown in the picture below. This structure isn't deleted from memory, so rules could be run retroactively to identify Havoc agent actions.

```

vol -r pretty -p ./Volatility/ -f Win10-Analysis-Snapshot13.vmem havoc.Havoc --f
Volatility 3 Framework 2.5.2
Formatting...0.00          PDB scanning finished
| PID |          Process | Agent ID |
* | 5544 | chrome-updater | 4b9ccaea | 8c0a8026307278b0de8472a2407c08a83cd22004t

```

We have also created a Python script to parse Havoc C2 traffic from a packet capture. The requirements for use are in the [GitHub repository](#).

The script requires either that the C2 traffic was sent over HTTP or that you can decrypt the TLS layer of the HTTPS traffic using something like TLS MASTER secrets. The Heimdall range is designed to save all these secrets for pcap decryption.

If you didn't have the first packet where the encryption keys are, you could get the keys from memory, as previously discussed, and use them to decrypt the packet capture traffic.

An example of the expected output can be found below.

```
python3 havoc-pcap-parser.py --pcap Havoc-MemoryCapture.pcapng
[+] Filtering for HTTP traffic
[+] Agent -> Team Server
[+] Found Havoc C2
  [-] Agent ID: 2f09db1e
  [-] Magic Bytes: deadbeef
  [-] C2 Address: http://havoc-http.the-briar-patch.cc/Collector/2.0/settings/
[+] Found AES Key
  [-] Key: d0f40032e0347cf4f42472ae2066e6eac82ce0d28ce8e4829edcc41ec48836d6
  [-] IV: dc0a16f0046c3c24bed2e29e88805296
```

## Detecting Havoc C2 in using SIEM

---

This was one area of the research that yielded limited information. As previously mentioned, commands sent from the teamserver to the demon are contained inside BOFS; searching for any indication of this communication in Elastic yields no actionable results.

If an attacker chooses to send shell commands from the teamserver, such as the command below, you'd be able to pick it up in Elastic with PacketBeat enabled.

```
shell net localgroup administrators admin443 /add
```

In the context of Havoc, a shell or PowerShell command is specified by the attacker, and this opens **cmd [dot] exe** or **powershell [dot] exe**, respectively. They then run commands on the target machine in the context of a local **cmd [dot] exe** or **powershell [dot] exe** session. Therefore, it would get picked up in Windows Event Logging, Security Logs, Elastic, or your SIEM of choice.

If an attacker opts for stealth, they'll run their commands without a shell, therefore as BOFs. With our Elastic setup, we couldn't retrieve details about commands executed and stored in BOFs. The only way we found to capture commands was if the attacker ran their commands to the agent through **cmd [dot] exe** or PowerShell, which they can specify from the team server.

## Getting hands-on

---

If you're an Immersive Labs CyberPro customer, you might enjoy our **Havoc C2: Memory Forensics** lab, a hands-on practical lab to test out the techniques in this research report.

The Immersive Labs CTI team also researched another C2 framework called Sliver. If you're interested, check out the [research blog post](#). If you're a CyberPro customer, have a look at the lab **Sliver C2: Memory Forensics**. We also have a Team Sim called **Detecting Sliver**, for those with Team Sim licensing.

You can also find the detection engineering range without the addition of the attacker infrastructure in the Ranges Dashboard as the **Heimdall Detection Engineering** range.

To learn more about how Immersive Labs helps organizations assess, build, and prove cyber resilience, visit our [Resources Center](#).

Published

April 9, 2024

Topics

[Cybersecurity](#), [emerging threats](#)



WRITTEN BY

Ben Hopkins